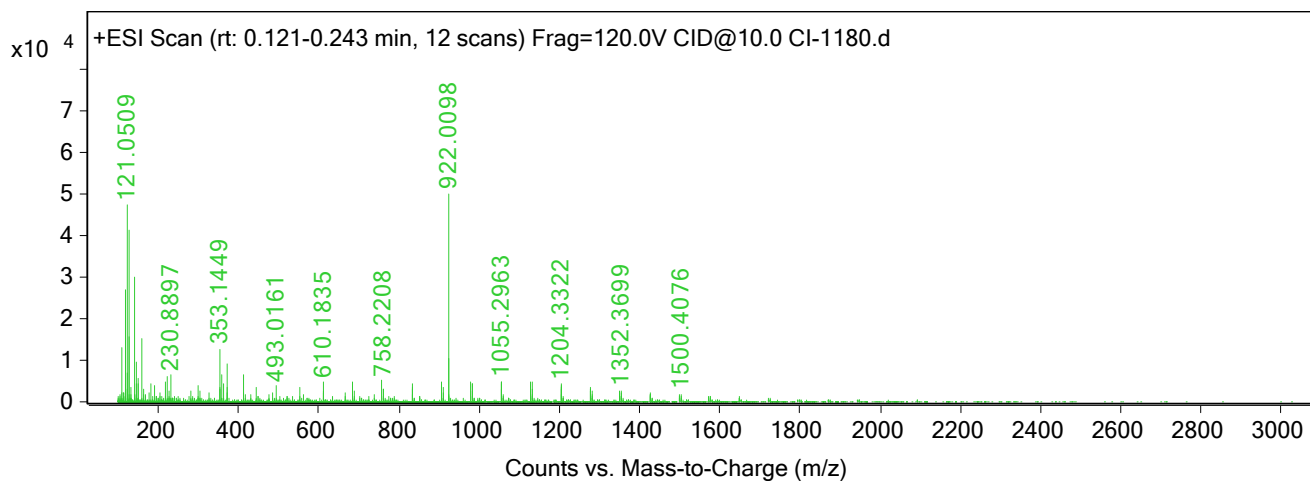


Qualitative Analysis Report

Data File	CI-1180.d	Sample Name	CI-1180
Sample Type	Sample	Position	P3-B4
Instrument Name	Instrument 1	User Name	
Acq Method	Service Samples +ve.m	Acquired Time	15/03/2024 14:21:50 (UTC+00:00)
IRM Calibration Status	Success	DA Method	Default.m
Comment			
Sample Group			
Stream Name	LC 1	Info.	
Acquisition SW Version	6200 series TOF/6500 series Q-TOF B.09.00 (B9044.0)	Acquisition Time (Local)	15/03/2024 14:21:50 (UTC+00:00)
QTOF Firmware Version	10.723	QTOF Driver Version	8.00.00
		Tune Mass Range Max.	3200

Spectra

Spectrum Source	Fragmentor Voltage	Collision Energy	Ionization Mode
Peak (1) in "+ TIC Scan"	120	10	ESI

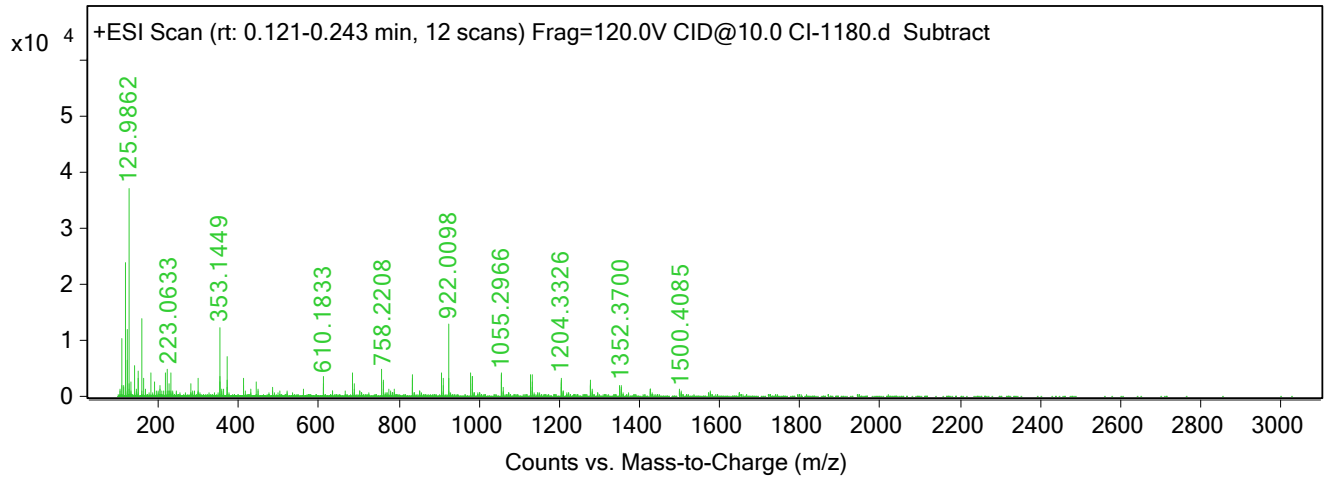


Peak List

m/z	z	Abund
110.0088		13220.44
116.9763		26955.73
121.0509	1	47247
125.9862		41231.36
127.0726		15675.68
141.9586		29842.88
158.0028		15081.66
353.1449	1	12623.02
922.0098	1	50093.13
923.0121	1	10444.81

Qualitative Analysis Report

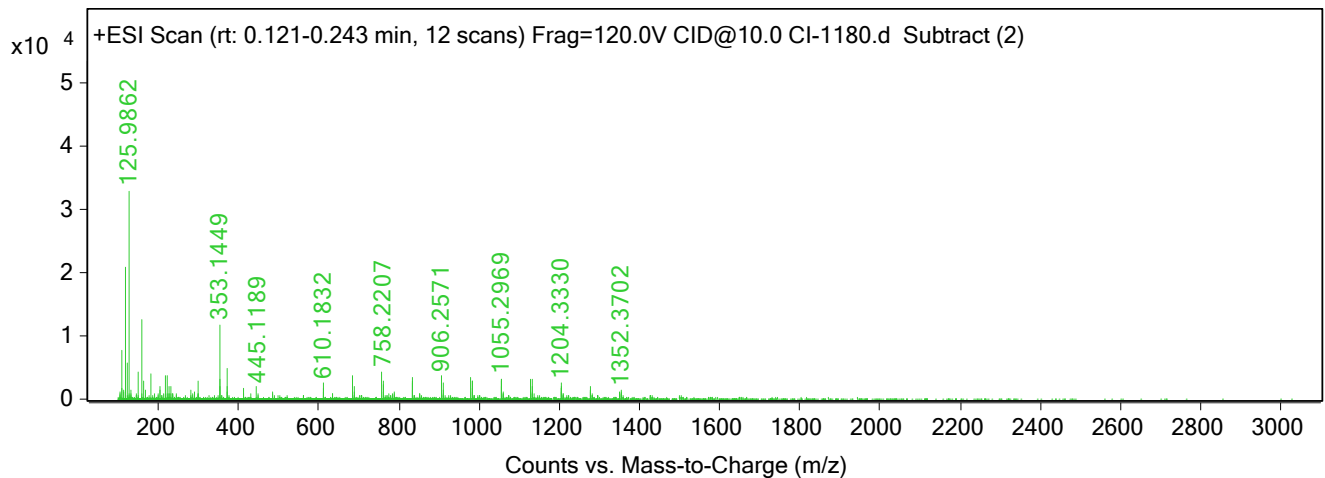
Fragmentor Voltage Collision Energy Ionization Mode
120 10 ESI



Peak List

m/z	z	Abund
110.0088		10432.13
116.9762		24010.03
121.0077		6342.15
121.0509		12003.48
125.9862	1	37108.11
141.9586		5465.77
158.0027		13840.7
353.1449	1	12255.07
371.1011	1	6984.63
922.0098	1	13052.94

Fragmentor Voltage Collision Energy Ionization Mode
120 10 ESI



Qualitative Analysis Report

Peak List

<i>m/z</i>	z	Abund
110.0088	1	7643.83
116.9761		21064.32
121.0077		5622.38
125.9862	1	32984.86
149.0022		4307.97
158.0027		12599.73
180.974		4105.69
353.1449	1	11887.12
371.101	1	4903.28
758.2207	1	4375.59

--- End Of Report ---